



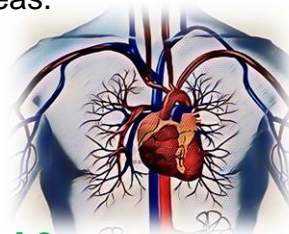
Hong Kong Association of Critical Care Nurses 香港危重病學護士協會

Elementary Critical Care Nursing (ECCN)

It is designed to enable frontline nurses to understand the basic concepts in the monitoring and management of critically ill patient in Critical Care areas.

It consist of 2 modules:

1. **Respiratory Nursing**
2. **Cardiovascular Nursing**



Module 2B: Cardiovascular Nursing 2019

	Date	Topics
1	Aug 6 (Tue) 6:30-8:30pm	◆ Cardiovascular Physiology ◆ Physical Assessment of CVS System
2	Aug 13 (Tue) 6:30-8:30pm	◆ Common Arrhythmias ◆ Cardiac Pacing
3	Aug 20 (Tue) 6:30-8:30pm	◆ Acute Coronary Syndrome & Nursing Management ◆ PCI
4	Aug 27 (Tue) 6:30-8:30pm	◆ Haemodynamic Monitoring ◆ Shock & Nursing Management
5	Sep 3 (Tue) 6:30-8:30pm	◆ Fluid and Electrolytes
6	Sep 10 (Tue) 6:30-8:30pm	◆ Open Heart Surgery & Post-operative Management ◆ IABP
7	Sep 17 (Tue) 6:30-8:30pm	◆ Common CVS Drugs Used in ICU ◆ CPR Update
8	Sep 24 (Tue) 6:30-8:30pm	◆ Course Review and Consolidation ◆ Quiz

Target :	All nurses are welcome
Capacity :	30
Speaker :	Nursing experts from critical care areas
Language medium :	English and Cantonese
Venue :	HKACCN, Room 501, 5/F, Great Smart Tower, 230 Wan Chai Road, H.K.
Award :	Certificate will be issued for those who have attended 80% of the lectures and have passed the quiz (15 CNE points)
Program Fee :	HK \$2,300 (member), HK\$ 2,600 (non-member) Early Bird Fee: HK\$ 2000 (For members who enroll 1 month before course starts)

Application and Payment

Please send your completed application form (with a stamped envelope) to the address below together with a crossed cheque payable to "Hong Kong Association of Critical Care Nurses Ltd"

Room 501, 5/F, Great Smart Tower, 230 Wan Chai Road, Hong Kong. Tel: 2861 2972 Fax: 2861 2784

Website: hkaccn.org E-mail: hkaccn@hotmail.com.hk